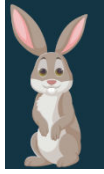
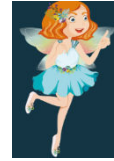


# Local Fun for Kids



## Luss



### Loch Lomond Faerie Trail

A magical faerie trail with wee wooden houses, hidden trolls and a mystery to solve! Pop your wellies on and head to Luss for a great day out! Grab your tickets and activity guide books and set off into the woodland behind the picturesque village of Luss. Explore our enchanting trail completing clues in your guide books as you go. Finish off the trail with a visit to Faerie Tale Farm to meet our goats, donkeys and highland cows.

#### **ALL TICKETS INCLUDE VISITING OUR ANIMALS AT FAERIE TALE FARM!**

- Open from 9.30am
- Closed Tuesdays & Wednesdays
- Last admission 3.30pm
- Trail shop closes at 4.45pm
- Faerie Tale Farm closes at 5pm
- Duration 1-2 hours



- |       |   |
|-------|---|
| Free  | - Infant (under 2 years old)  |
| £6.50 | • Faerie Trail Tickets (adult or child 2yrs+) (adult or child 2yrs+)              |
| £22   | • Faerie Trail Family Ticket Includes 4 x tickets<br>(Tickets purchasable online) |

# Local Fun for Kids

## Luss

### Loch Lomond Leisure - PEDAL BOAT

Boat hire is now available from Loch Lomond Leisure.  
Explore Loch Lomond at your own pace with a pedal boat.  
A buoyancy aid will be supplied and must be worn

- Pedal boat hire is available from March to October 10am-5pm
- Pedal boat hire is not available during the winter months.



<b>30 Minutes</b>	<b>£25</b>
<b>60 Minutes</b>	<b>£40</b>
<b>2 Hours</b>	<b>£60</b>
<b>4 Hours</b>	<b>£80</b>
<b>8 Hours</b>	<b>£120</b>

Luss Beach, next to Luss car park, Luss, G83 8PA

03335770715

**\*\*other water sports available\*\***

**Please note: You can book in advance to guarantee a space, or book on the day at the beach, subject to availability.**

# Local Fun for Kids

Balloch (Loch Lomond Shores) – 15-minute drive

## Sea Life – Loch Lomond

There is so much to see at SEA LIFE Loch Lomond! Dive in and you'll discover:

- **Meet April, our rescued Olive Ridley Turtle** - and find out more about her journey 5,000 miles to make Loch Lomond her forever home
- **Over 1500 creatures** - Take a fascinating journey from the shores of Loch Lomond to the depths of the world's oceans in 7 themed zones, including our interactive rockpool experience.
- **Tropical Ocean Tunnel** - Journey through the Tropical Ocean Tunnel, where you can come face-to-fin with Blacktip sharks, rays and other critters of the seas
- **Otterly adorable** - See & learn about our Otter, Cub - watch out, she is cheeky! Asian Short Clawed Otters are the smallest of all species of Otter



Opening Times - **10am - 4pm (Last entry at 2:50pm)**

Save up to £5.50 by booking online in advance. **Pre-booking tickets before you visit is essential.**

### **Standard Admission**

Booking online now essential

Starting from

£19.00

[Visit SEA LIFE Loch Lomond Aquarium Centre](#)

# Local Fun for Kids

Balloch (Loch Lomond Shores) - 15-minute drive

## Loch Lomond Bird of Prey Centre

The daily flying shows are entertaining and informative, allowing our visitors to see these magnificent creatures at close quarters while learning about their unique features and the threats they face in the wild. The flying area is located within a managed woodland, the perfect setting for the birds to demonstrate their skills, as well as being a home for many species of flora and fauna.



### **Flying Show Times (Except in extreme weather)**

March to October. 11:30am & 2:00pm

- The Bird of Prey Centre is open every day Monday to Sunday, including bank holidays.
- Open 10am until 4pm (GMT), 5pm (BST). Second week in February until the end of October.
- The Bird of Prey Centre is closed to visitors from early November until early February.

**\*\*Bookings not required\*\***

Adult	£9.50
Child 3-16 years	£5
Infant 0-2	Free



# Local Fun for Kids



**Monty's Farm Park**  
**Cardross - 20-minute drive**



Monty's is a unique farm experience where families can enjoy farm play done the Ardardan way.

Monty's has lots to do outdoors with a unique play barn for indoor fun.



## OPENING TIMES

**\*\*IT'S BEST TO PRE-BOOK MONTY'S SESSIONS\*\***

### **Our Usual Opening Hours are:**

Mon to Wed 10-3pm (indoor & outdoor play)

Thurs & Fri 10-4pm (indoor & outdoor play)

Sat & Sun 10-4pm (outdoor play) and choose your 2-hour indoor play slot

### **These tickets include:**

- **Entry into Monty's whenever you fancy between 10-4pm (come whenever suits, as long as you arrive and leave within this session time). We recommend last entry by no later than 3pm**
  - **Meeting Monty's animal mates on the farm**
    - **Exploring our woods**
  - **Having a go on our pedal go-karts (fun for kids and a workout for adults!)**
    - **Playing on our outdoor play structures**
    - **Digging in our sandpit**

### **Please Note:**

**Indoor Play is not included in this ticket but a timed session can be added on at the next stage of booking (once you've chosen the no. of tickets and date you'd like to come along). If indoor play doesn't show up as an option it means slots are full for your chosen Monty's session.**

**Indoor play is an additional £3.50 per child if you fancy.**

Child (Outdoor Play)	From £8-£10
Adult	£4-£5.50
Toddler (Outdoor Play)	£8-£8.50

## Local Fun for Kids

### Blair Drummond Safari and Adventure Park

#### Stirling - 50-minute drive



#### Opening Times

**10:00 am to 5:30 pm - Last entry 4:30 pm**

Tickets are only available online, so be sure to book in advance – weekends and holidays tend to sell out fast.

Adults	£22.50
Children (age 3-15 years)	£16
Under 3	Free

# Local Fun for Kids

## Briarlands Farm



### Stirling - 50-minute drive

There is loads to do at Briarlands to keep your wee ones entertained, from jumping pillows to football golf; tractor and trailer rides to archery. We also have sessions for petting our guinea pigs and rabbits, and feed available for purchase for some of the other farm animals around our Farm Park.

We have a cafe and small indoor play frame suitable for children up to age 7. The cafe serves light lunches, coffees and delicious home-baking, all made on the premises.



### Open everyday

10am-5:30pm

Last entry 4pm

Cafe serves food until 4:30pm

Adult – £8.00

Children (aged 2-16)- £10.00

Under 2's Free of Charge

Family Ticket - £34.00

A Family Ticket is 2 adults & 2 kids OR 1 adult & 3 kids

# Local Fun for Kids



## Science Centre

### Glasgow - 50-minute drive

Book your tickets to visit the Science Mall and explore your curiosity across three huge floors of amazing, interactive exhibits. Make a whole day of it! You'll also have the option when booking to select Add-On experiences such as IMAX mini-blockbusters and Planetarium shows.



## Open everyday

10am-5pm

Last entry 3pm

Adult	£14.09
Child – under 16	£10.90
Under 3	Free